

QUICK FACTS: Student Support Services

KSU offers a variety of services for your personal and your academic well-being. Below is a list of the resources that you can utilize. This is not a comprehensive list, but it is one that provides many of the more common services offered and used by KSU students. Please navigate to their websites for detailed information on their operations and offerings!

Academic Supports

- **Supplemental Instruction (Known as "SI")**
 - Provides support by equipping you with the skills required to succeed inside and outside the classroom (typically available in historically difficult, introductory-type classes)
- **SMART Centers**
 - Science and Math Academic Resources and Tutoring (SMART)
 - They have expanded to some other disciplines! (Engineering, Humanities, etc.)
- **Writing Center**
 - Supports writing and literacy (use for assistance with papers, writing in general, etc.)
- **PASS Workshops**
 - In collaboration with Counseling and Psychological Services
 - Test Anxiety, Time Management, Procrastination, and Study Skills seminars
- **College-Specific Supports** (not a comprehensive list)
 - College of Science and Math's Learning Assistant "LA" Program
 - SPCEET's (Engineering) CLUE Center
 - CCSE's (Computing) Tutoring Lab
 - Coles College of Business Knack Tutoring
- **Student Disability Services**
 - Can arrange accommodations to support you both in and outside of the classroom

Personal/Well-Being Supports

- CARE Services
- Center for Young Adult Addiction and Recovery
- Counseling and Psychological Services
- Career Planning and Development
- Division of Diverse and Inclusive Excellence
- Financial Aid
- Coles College of Business Leadership and Career Program
- Global Village
- Health Promotion and Wellness
- LGBTQ Resource Center
- Military and Veteran Resources
- Odyssey Peer Mentoring
- Student Advocacy
- Student Athlete Success Services
- Women's Resource Center

QUICK FACTS: KSU Writing Center

1

The KSU Writing Center provides **one-on-one online writing help in any subject, at any level, and at any stage of the writing process**. Specialized support is available for graduate students and students whose primary language is not English.

Synchronous "**Live Feedback**" sessions are available seven days a week and offer audio and visual feeds, a live chat box, and a white board that students and their writing assistants can use to interact in real time



Asynchronous "**Written Feedback**" is offered five days a week and **is reserved for students in 100% online degree programs**. Students upload assignment guidelines and drafts to receive feedback from a writing assistant within 48 hours of their scheduled appointment.

For more information, please visit the following website:



pic or
click
←

QUICK FACTS: Supplemental Instruction



Supplemental Instruction (SI) is a program that offers **FREE weekly study sessions for students enrolled in targeted courses**. The purpose of SI is to enhance student learning and success.

SI Leaders are students who have previously taken the class and earned an A. They are prepared to share what they have learned about how to study effectively for the course. **They will be in class with students every day, taking notes and listening closely to the professor.** They are study session facilitators who provide structure to the study session and help students stay focused on learning.



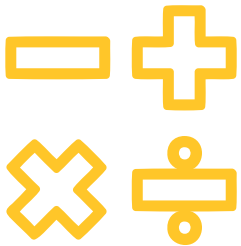
SI Leaders guide students through practice and activities that review and reinforce the material taught in class. **Students compare notes, discuss important concepts, develop strategies for studying the subject, and test themselves before the professor does!** SI is for any student regardless of skill level. Sessions provide an opportunity for all students to learn and grow.

For more information, please visit the following website:



pic or
click
↩

QUICK FACTS: SMART Center



The Science and Math Academic Resource and Tutoring (SMART) Center at KSU provides **tutoring for all current KSU students in Math, Science, Engineering, Humanities, and Social Science courses.**

In the SMART Centers you will find people and resources to help with most general education Mathematics, Chemistry, and Physics courses along with select Engineering classes offered at KSU. **No appointments are necessary to use the SMART Center's services, stop by any time they are open for help in your classes.**



SMART Centers are not a one-on-one tutoring environment. Please be prepared to ask questions when a tutor is available. Students sign in to keep record of how busy the centers are and to schedule tutors who help with the appropriate courses at the appropriate times. SMART Centers are a place for assistance with understanding concepts and is not a replacement for classroom instruction.

For more information, please visit the following website:



pic or
click
↙

QUICK FACTS: PASS Workshops



Successful students rely on a toolbox of strategies, techniques and supports to help them achieve their goals. **So You Think You Can't PASS? Workshops can help you develop strategies that will boost your confidence, enhance your grades, and get you where you want to go.**

So You Think You Can't PASS? Workshops **typically last about 50 minutes and are offered both virtually and in-person!** Workshops are created and run by Counseling and Psychological Services in partnership with Academic Advising and the President's Focused Learner Program.



Workshop topics include:

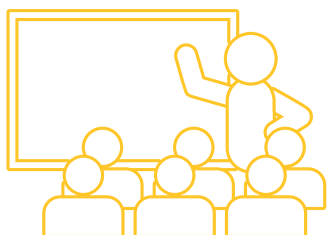
- Study Skills
- Time Management
- Test Anxiety
- Procrastination

For more information, please visit the following website:



pic or
click
←

QUICK FACTS: Learning Assistant Program



The Learning Assistant Program **places high achieving undergraduate students in courses they have previously completed** to support KSU's student success efforts. These Learning Assistants, or LAs, assist students in developing strategies that will help strengthen their knowledge, develop transferable learning skills, and achieve academic success.

LA responsibilities may include working with small groups of students; reviewing clicker questions, practice questions, or other exercises; team teaching recitation or laboratory sections with a graduate teaching assistant or faculty mentor; or facilitating online discussions and other learning activities that take place during class meetings.



Having successfully completed the course where they serve as an LA, **LAs will be able to guide or coach students by sharing skills and knowledge**, as well as by communicating confidence and encouragement. LAs also serve as an example - demonstrating how to successfully approach academic challenges.

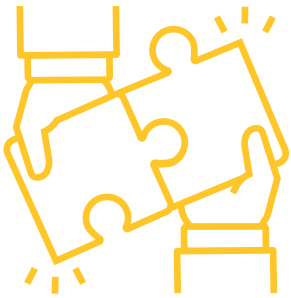


For more information, please visit the following website:



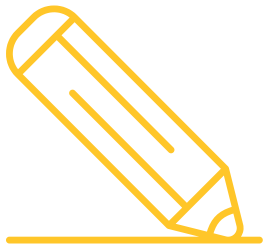
pic or
click
↩

QUICK FACTS: CLUE Center



The Southern Polytechnic College of Engineering and Engineering Technology CLUE (Collaborative Learning for Undergraduate Engineering) Center **provides peer-based academic support for a selection of engineering and engineering technology courses.**

Tutoring is offered **Monday through Friday, both face-to-face and online.** Face-to-face tutoring is in room 237 of the Engineering Lab Building (Building G) and online is via MS Teams. Instructions for having an online tutoring session are on the online tutoring page.



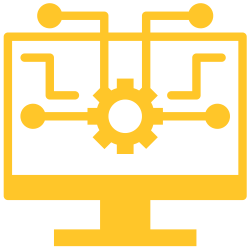
Tutoring for a given subject is available according to a weekly schedule, based on the tutors' availability. During those hours, students are welcome to **receive tutoring from a peer who has already earned either an A or a B in the course.** The schedule page provides the days and times when tutoring for each course is provided.

For more information, please visit the following website:



pic or
click
↩

QUICK FACTS: CCSE's Tutoring Lab



The College of Computing and Software Engineering (CCSE) Tutoring Lab **welcomes all undergraduate and graduate students** enrolled in ACS, ACST, CGDD, CS, CSE, CYBR, IT, and SWE courses!

CCSE's Tutoring Lab uses **an appointment-based tutoring system**. To schedule an appointment, please use the link below to visit the website. Online tutoring sessions are available by appointment only.



The **courses tutored are listed on CCSE Tutoring Lab's website**. Please note that all subjects/languages do not have tutors available at all times. When booking an appointment, click on the "calendar day" to see the next available appointment time. Tutors will try to assist in other subjects as available and be as helpful as possible!

For more information, please visit the following website:



pic or
click

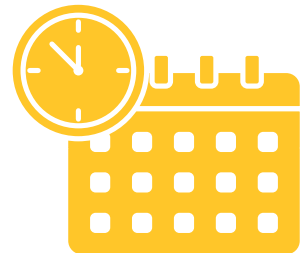
QUICK FACTS:

Cole College of Business Knack Tutoring



Cole College of Business is partnered with Knack Tutoring, the fastest growing peer learning platform for college students. The focus of Knack tutoring is on **helping students succeed in the classroom and beyond.**

The Knack platform operates like Uber, allowing students in need of tutoring services to **book sessions on-demand from verified Kennesaw peer tutors** who have previously completed the exact courses they are offering assistance in.



Through the partnership, Cole College of Business is also providing **high-achieving students the opportunity to become verified Kennesaw Peer Tutors.** Visit the website below for more information on becoming a tutor!

For more information, please visit the following website:



*pic or
click*



QUICK FACTS:

Student Disability Services



Student Disability Services (SDS) is the **first contact for students with disabilities to arrange accommodations and locate campus and community resources.** SDS assists in identifying appropriate accommodations and it is the student's responsibility to submit notice of accommodations to instructors and campus departments as needed.

The mission of SDS is to **ensure equal access to all educational experiences by students with identified, legally defined disabilities,** and to promote the University's knowledge of and compliance with all applicable federal and state laws. SDS strives to enhance students' total academic and personal development and to promote the recognition of the contributions made by individuals with disabilities to the rich diversity of the University.



To access accommodations, **students must first connect with SDS and provide the appropriate documentation** as outlined by the Board of Regents of the University System of Georgia. Documentation submitted to SDS remains confidential within SDS and is not shared with third parties without written permission from the student.

For more information, please visit the following website:



pic or
click
↙

QUICK FACTS: CARE Services



The mission of Campus Awareness, Resource & Empowerment (CARE) Services is to **provide access to food, temporary housing, and other supportive services** to foster students' realization of a healthy, stable, and dignified life academically and professionally.

CARE Services serves as a model of professional excellence and effectiveness by **upholding core values of social justice, equity, economic sustainability, and mutual partnership.**



CARE Services offers four programs to support KSU students and the community:

- **Emergency Assistance:** Offering ALL KSU students financial assistance or other types of assistance
- **CARE Pantry:** Provides food for ANY KSU student experiencing food insecurity
- **ASCEND:** Students in this program are pursuing their first bachelor's degree and experienced homelessness and/or foster care while in high school
- **Case Management:** Offers students resources, referrals, and additional life skills to enable self-sufficiency



For more information, please visit the following website:



pic or
click
←

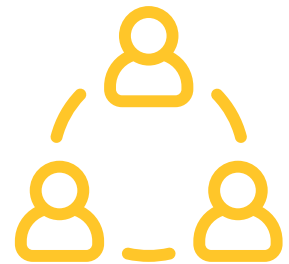
QUICK FACTS:

Center for Young Adult Addiction and Recovery



The Center for Young Adult Addiction and Recovery (CYAAR) **supports students' overall well-being, particularly for those in or seeking recovery** through innovative programming like Alcohol and Other Drug Prevention & Education, Recovery Support Services, the Collegiate Recovery Program, and Recovery Science Research.

CYAAR **provides recovery-based programs, a peer recovery community, and education to help those impacted by addiction.** The Center changes lives, connects students to the community, and lays a solid foundation for transformational recovery.



CYAAR programs and services include:

- **Collegiate Recovery Program:** Connects students with each other while providing access to resources necessary for recovery and academic success
- **Recovery Support Services:** Counseling and Case Management, Addictive Disorder Assessments, Referrals and Recommendations for Treatment
- **Alcohol and Other Drug Workshops:** Wise Choices, Group Sanctioned, Recovery Ally Training, Peer Education, Harm Education
- **Recovery Science Research:** Explores how people get well



For more information, please visit the following website:



pic or
click
↙

QUICK FACTS:

Counseling and Psychological Services



Counseling and Psychological Services supports the academic mission of Kennesaw State University by **enhancing students' educational, career, personal, and interpersonal development**

Counseling and Psychological Services provides a wide range of service, including workshops aimed at helping students develop skills for managing the stress of college, group counseling focused on helping student better manage emotions and navigate their relationships, individual counseling for a wide range of mental wellness concerns, as well as psychiatric medication evaluation and treatment.



Immediate support is available 24/7/365 via Wellbeing@KSU: A mental health support line for in-the-moment support and linkages to next steps, regardless of time of day or location. Call anytime, any place at **833-874-0013** to be connected to a licensed counselor who will listen, offer guidance, and help you set a plan.



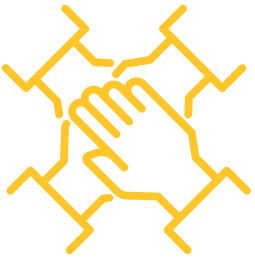
For more information, please visit the following website:



pic or
click

QUICK FACTS:

Division of Diverse and Inclusive Excellence



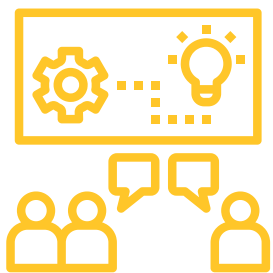
The Division of Diverse and Inclusive Excellence seeks to **foster an inclusive learning and work environment** that promotes an understanding of, and appreciation for, difference through initiatives, programs, services, and training.

The Division of Diverse and Inclusive Excellence **celebrates the wealth of diverse excellence that exists in our community and engages people with respect as fellow humans.** The Division of Diverse and Inclusive Excellence leverages diverse excellence to produce transformational innovation and impact.



The Division of Diverse and Inclusive Excellence programs, services and trainings include:

- **Student Programs:** Strategic Outreach and Diversity Initiatives (SODI), Student Diversity Ambassadors Program
- **Faculty and Staff Programs:** Diversity Liaisons, Diversity Research Grant
- **Presidential Initiatives:** Presidential Task Force on Peace, Presidential Commissions, Presidential Diversity Awards
- **Education, Training, and Resources:** Antiracism Series, Self Care Guides, Glossary, Campus Resources, TellKSU, Inclusive Excellence Cohort Certificate Program, Training/Workshops, National Center for Faculty Development and Diversity



For more information, please visit the following website:



pic or
click

QUICK FACTS: Financial Aid



The Office of Scholarships and Financial Aid provides **financial assistance, resources, and services** to students at Kennesaw State University.

The Office of Scholarships and Financial Aid believes students from all economic backgrounds should have the opportunity to attend KSU. Whether you attend the Kennesaw or Marietta campuses, the Office of Scholarships and Financial aid will **help you explore the many scholarship, grant, loan and work-study opportunities available** that help make paying for college as affordable as possible.



Need help? No problem! **Contact your financial aid counselor for assistance.** Counselors are assigned by the first letter of your last name. Counselor emails are listed on the Financial Aid website. Please email from your KSU email address and include your KSU ID number when emailing your counselor.

For more information, please visit the following website:



pic or
click
↙

QUICK FACTS:

Coles College of Business Hughes Leadership & Career Program



The Hughes Leadership and Career Program is **designed to support academic and professional development to prepare students for future success.** Tom and Barbara Hughes have made this innovative program possible through their generous donation.

BUSA courses are built around engagement and participation in curated activities instead of graded assignments. **Students have the opportunity to personalize their experience by selecting option activities that are meaningful and make sense with their career goals.** Each course requires a personal assessment and career conversation (informational interview). BUSA 3150 and 4150 require a coaching meeting with an experienced Career Coach.



In the 2019-2020 academic year, the Hughes Leadership & Career Program (BUSA courses) was re-imagined to increase its relevance and applicability to the college-to-career journey by using the Flight Academy engagement platform. This **mobile and web app tracks progress toward course completion** in each of the three required zero credit hour courses.

For more information, please visit the following website:



pic or
click
↙

QUICK FACTS: Global Village



The Global Village (GV) is an **inclusive and welcoming center for KSU's domestic and international students** that is geared to serve their needs and support their holistic development. The GV seeks to promote international awareness and global learning through engaging student programs and services.

The GV center provides opportunities for cross-cultural engagement between international and domestic KSU students. **The center sponsors academic, cultural, leadership, and social programs that enrich the educational experience of all Kennesaw State University students**, with an emphasis on developing global competence through intercultural engagement.



The GV provides students with access to a resource library collection as well graduate exam preparation textbooks, a computer lab, professional and student staff, and informational pamphlets and bulletin boards covering topics of importance to the international community. **In addition to these services, the GV also hosts weekly and monthly programming**, including workshops, discussions, and more.

For more information, please visit the following website:



pic or
click
←

QUICK FACTS:

Health Promotion and Wellness



The mission of Health Promotion and Wellness is to **improve the balance of the intellectual, emotional, physical, social, environmental, and spiritual development of students** through awareness and education.

To support a healthy learning environment for students, Health Promotion and Wellness offers a variety of services and programs at a free or discounted cost. The **programs and services offered support students' overall wellness through health education workshops and events** including, but not limited to, stress management programs, nutrition consultations and workshops, risk reduction education, CPR certification, and more.



Health Promotion and Wellness **programs and services:**



- 21st Birthday Card
- Fitness Testing
- Peer Health Education
- Condom Concierge
- Nutrition Services
- CPR, AED, First Aid
- HIV Testing
- Wellness Coaching
- Run for Recovery
- Events
- Virtual Programs
- Resource Center

For more information, please visit the following website:



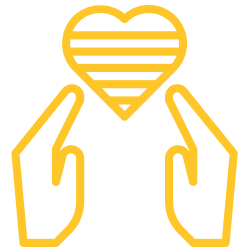
pic or
click
↙

QUICK FACTS: LGBTQ Resource Center



The LGBTQ Resource Center uses engaging student programs to **create and sustain an inclusive environment that promotes educational excellence** through multicultural experiences. The LGBTQ Resource Center is a community space for students to gather, create new friendships, study, and gain access to resources.

The LGBTQ Resource Center sponsors academic, cultural, leadership, and social programs that enrich the educational experience of all Kennesaw State University Students, with an emphasis on topics of gender identity and sexual orientation. Within the Center, **students are presented with opportunities to learn about various aspects of queer identity** and how queer identity intersects with the other aspects of identity they carry.



The Resource Center provides students with access to a library collection of over 500 titles, a computer lab, professional and student staff, and informational pamphlets covering topics of importance to the LGBTQ community. **In addition to these services, the Center also hosts weekly and monthly programming**, including Queer Film Fridays, What's the Tea?, and Campus Connections.

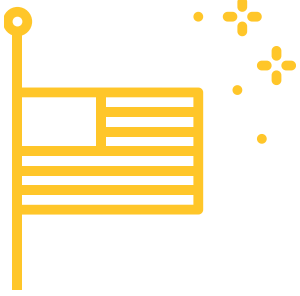
For more information, please visit the following website:



pic or
click

QUICK FACTS:

Military and Veteran Resources



Kennesaw State's Military and Veteran Services is fully staffed by experienced veterans and offers a **one-stop shop that is easily accessible and widely available to service members, veterans, and dependents**. Our goal is to empower our military community with the tools necessary for accomplishing their academic goals

KSU Military & Veteran Services serves as the designated point of contact that **assists service members, veterans, and dependents with academic and financial advising** as it relates to Tuition Assistance and/or VA educational benefits. Military & Veteran Services provides access to disability counseling and job search activities via on-campus and off-campus referrals to the appropriate departments and/or agencies.



The Military and Veteran Services team seeks to provide an inclusive and educational environment that fosters student success and achievement. Whether you are a new or transferring student, Military and Veteran Services will **help guide you to the resources you need** to make the most of your experience at KSU, while setting you up for success beyond the classroom.



For more information, please visit the following website:



pic or
click

A yellow curved arrow pointing from the text 'pic or click' towards the QR code.

QUICK FACTS: Odyssey Peer Mentoring



The Odyssey Peer Mentoring Program is **designed to help new freshman and transfer students successfully transition to KSU** while giving students leadership development experience. Odyssey peer mentors are student leaders who are academically successful and represent all majors across campus.

Mentors **help new students understand and prepare for the academic and social demands of college life as well as encourage a sense of community.** The Odyssey Peer Mentoring Program contributes to the retention, progression, and graduation of KSU students by helping students find the resources they need to be successful at KSU.



Mentoring topics range from **making campus connections, preparing for academic and professional success, discovering goals and personal path, overcoming challenges, and promoting positive and healthy habits.** The Odyssey Peer Mentoring Program is a part of the Department of Student Leadership and Service in the Division of Student Affairs.

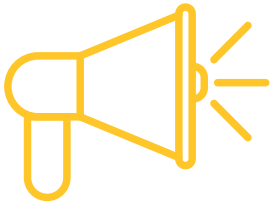
For more information, please visit the following website:



pic or
click

QUICK FACTS:

Student Advocacy



Student Advocacy serves as a central support to all KSU students.

The Office of Student Advocacy partners with students to address challenges pertaining to physical and mental health, academic concerns, and social adjustment by making inquiries, referrals, coaching students through effective communication techniques, and providing conflict mediation upon request.

Student Advocacy connects students with needed resources, helps students arrange for personal care, and collaborates with campus partners to **help students navigate complex situations as a means of achieving academic and personal goals.**



Student Advocacy Services:

- **Academic Consultation:** Review concerns submitted to Student Advocacy and provide students with strategies to resolve concerns
- **Personal Guidance:** Individual problem-solving consultation; conflict mediation & resolution
- **Education and Outreach:** Workshops, trainings, and dialogue facilitation on a variety of topics upon request



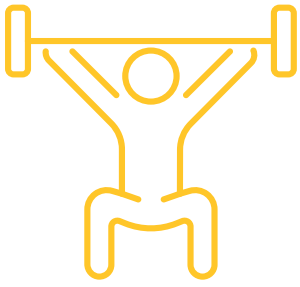
For more information, please visit the following website:



pic or
click

QUICK FACTS:

Student Athlete Success Services



The Kennesaw State University Student-Athlete Success Services (SASS) center staff is **dedicated to providing excellent academic support for all student-athletes** while they are pursuing their degree and ensures compliance with NCAA rules pertaining to academic eligibility.

Students are surrounded with **comprehensive academic support which helps them to be successful and balance the demands of being a student-athlete.** Located in the Academic Learning Center on the Kennesaw campus, SASS is centrally located to provide excellent access to needed resources for student-athletes.



SASS Services:

- Tutoring Services
- Academic Advising
- Eligibility Monitoring
- Learning Support
- Facilities
- Priority Registration
- Student-Athlete Recognition
- Flightplan

For more information, please visit the following website:



pic or
click

A yellow curved arrow pointing from the text 'pic or click' towards the QR code.

QUICK FACTS:

Women's Resource Center

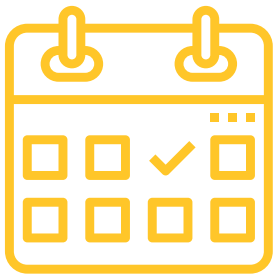


The Women's Resource Center is a **supportive space for students to gather and build community**. Students can take advantage of various programs that occur weekly in the Center that focus on gender identity and contemporary women's issues.

The Women's Resource Center's mission is to **enhance academic, personal, and professional performance and empower members of the KSU community to reach their full potential** by striving to create an inclusive and supportive environment. The Women's Resource Center's mission is achieved through a commitment to provide advocacy, outreach, training, and support.



Women's Resource Center Programs and Events:



- ONE Choice Training
- Salary Negotiation Workshops
- LeadHER Women's Leadership Program
- Signature Events (Domestic Violence Awareness Month, Healthy Relationships Week, Women's History Month, Sexual Assault Awareness Month)
- Center Programming ("Womxn and _____", "What is _____ Anyway?", Craft Corner, Well-Read Women)

For more information, please visit the following website:



pic or
click
←